



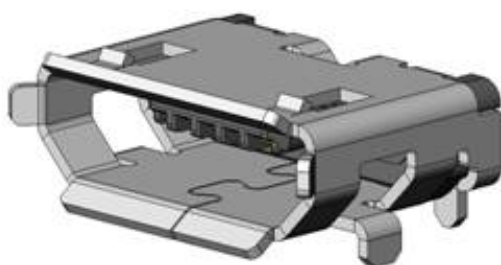
USB 2.0 Compatible Micro Connectors

DX4 Series

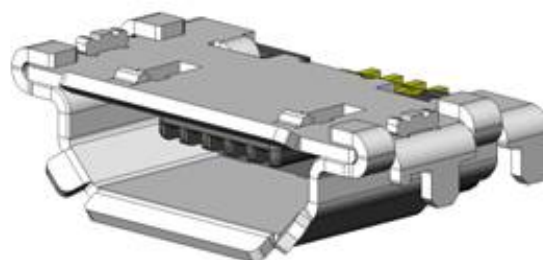
CONNECTOR

MB-0187-3

December 2014

RoHS Compliant


On-board Type

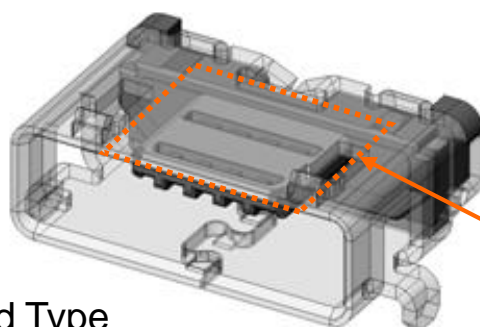


Mid-mount Type

The DX4 Series is a set of connectors compatible with the Micro-USB type USB 2.0 for small devices standardized by the USB Implementers Forum, Inc.

Features

- Compatible with Universal Serial Bus Micro-USB Cables and Connectors Specification, Revision 1.01.
- Connector type: USB 2.0 compatible, Micro types
- Au plating over Pd-Ni alloy is used for mating cycle durability and long product life.
- Superior rigidity with high-strength stainless steel shell.
- Available in a variety of versions to suit diverse device configurations.
- Two-piece shell structure for mid-mount type to prevent contact failure due to flux scattering during reflow.
- Available in reinforced type, with reinforcement plate set in mating area to prevent damage from plug caused by misaligned mating. (Refer to drawing below)


**Reinforcement plate
of mating area**

Mating Area Reinforced Type

*In the above drawing the shell is transparent for illustration purposes to show the reinforcement plate.

General Specifications

- | | |
|---|------------------------------------|
| ■No. of Contacts: 5 positions | ■Rated Current: DC1.8A (Vbus, GND) |
| ■Contact Resistance: | Others DC0.5A |
| 30m ohm max. (initial) | ■Rated Voltage: AC30Vrms |
| ■Dielectric Withstanding Voltage: | ■Durability: 10,000 mating cycles |
| AC500Vrms per minute | ■Operating temperature: |
| ■Insulation Resistance: 1000M ohm (initial) | -30 Deg. C to +80 Deg. C |

Materials and Finishes

Component	Material and Finish
Insulator	Synthetic Resin
Contact	Copper alloy / Contact area: Au flash plating over Pd-Ni alloy over Ni Terminal area: Au flash plating over Ni
Shell	Stainless Steel / Sn plating over Ni

*For more information please refer to individual product drawings.

Ordering Information

DX4 R 0 05 J J 2 R1800

Series

DX4: USB2.0 Micro

R: Receptacle

Modification Code: #1

No. of Contacts: 5 pos.

Reel: 1800 pcs. / reel

Modification Code: #2

Plating Specification

J: Contact area: Au flash over Pd-Ni alloy over Ni

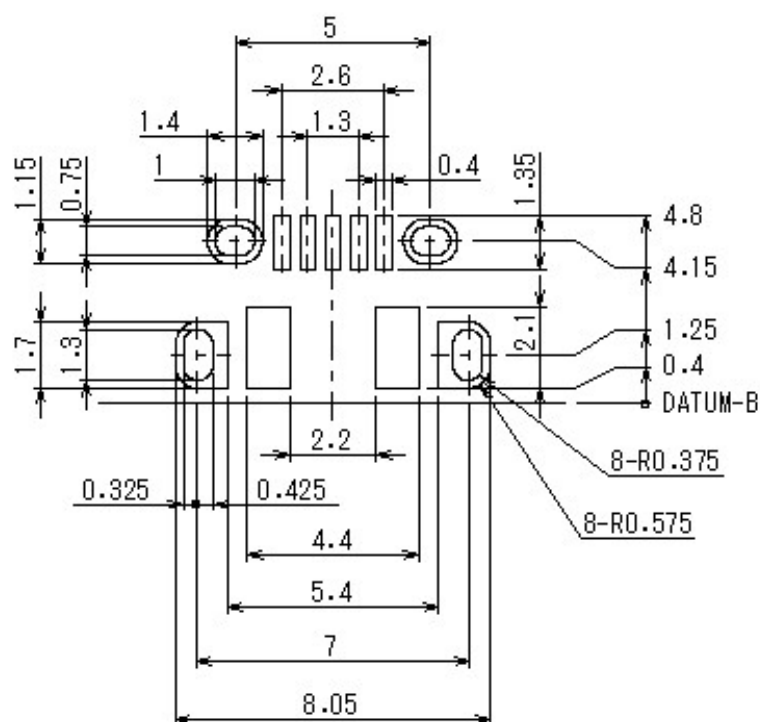
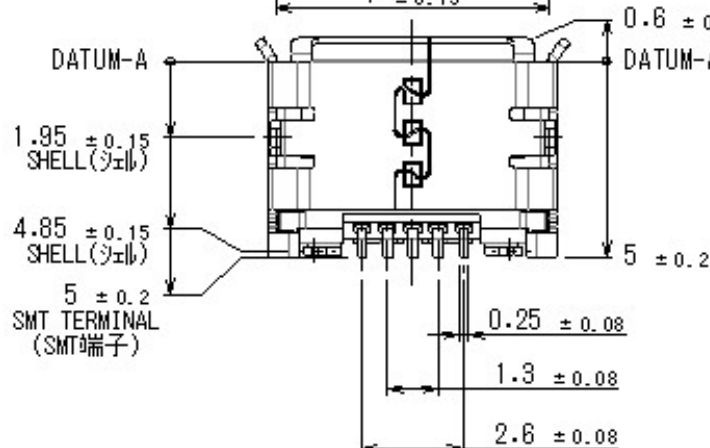
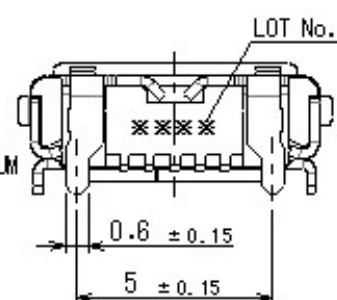
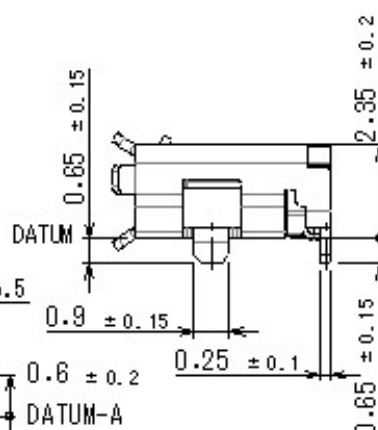
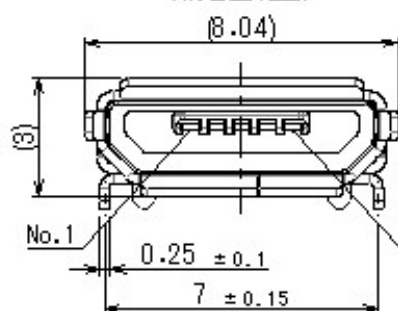
Board Connection Type (Shell area)

J: Through-hole type, H: Hold-down type

Micro-USB Connector Type	Part Number	SJ Drawing	Specification	Mounting Type		Mating Taper	Mating Area Reinforcement Plate			
Type B	DX4R005JJ2 (Individual Unit)	SJ110578	JACS-30162	On-board	Standard	Yes	No (Standard Type)			
	DX4R005JJ2R1800 (Reel Unit)	SJ110579				No				
	DX4R005HJ5 (Individual Unit)	SJ111770	JACS-30185	Yes						
	DX4R005HJ5R2000 (Reel Unit)	SJ111771		No						
	DX4R005JJ6 (Individual Unit)	SJ112420	Mid-mount	Standard		Yes	No (Standard Type)			
	DX4R005JJ6R1500 (Reel Unit)	SJ112421				No				
	DX4R005JJ7 (Individual Unit)	SJ112422				JACS-30252		No		
	DX4R005JJ7R1500 (Reel Unit)	SJ112423						No		
	DX4RN05JJ3 (Individual Unit)	SJ112800	JACS-30257	Standard		No	Yes (Mating Area Reinforced Type)			
	DX4RN05JJ3R2000 (Reel Unit)	SJ112801				Yes				
Type AB	DX4R105JJC (Individual Unit)	SJ113218	JACS-30281	On-board	Reverse	Yes		Yes (Mating Area Reinforced Type)		
	DX4R105JJCR1800 (Reel Unit)	SJ113219			Standard	No				
	DX4R205JJA (Individual Unit)	SJ112925	JACS-30267	On-board	Standard	No	Yes (Mating Area Reinforced Type)			
	DX4R205JJAR1800 (Reel Unit)	SJ112926			Reverse					
	DX4R305JJB (Individual Unit)	SJ112927	JACS-30268	Mid-mount	Standard	Yes			Yes (Mating Area Reinforced Type)	
	DX4R305JJBR1800 (Reel Unit)	SJ112928			Reverse	No				
	DX4R205JJ8 (Individual Unit)	SJ112802	JACS-30258	Mid-mount	Standard	Yes				Yes (Mating Area Reinforced Type)
	DX4R205JJ8R2000 (Reel Unit)	SJ112803				No				
DX4R205JJ9 (Individual Unit)	SJ112804	JACS-30259	Mid-mount	Standard	Yes	Yes (Mating Area Reinforced Type)				
DX4R205JJ9R2000 (Reel Unit)	SJ112805				No					

Note: Please place orders in reel units.

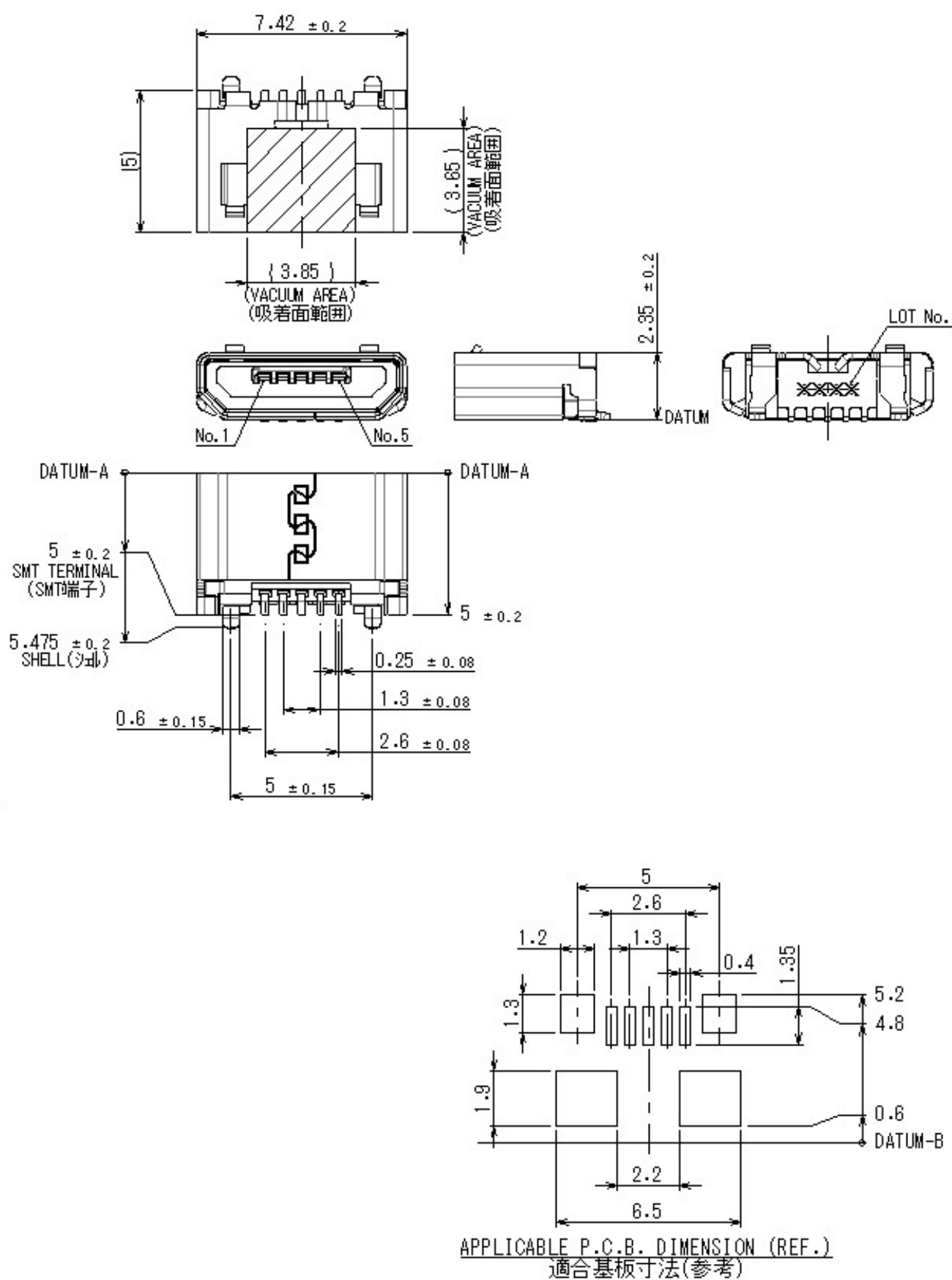
Technical drawing of the vacuum suction unit (Fig. 1). The drawing shows a cross-section of the unit with various dimensions. The top width is 7.42 ± 0.2 . The total height is 5. The height of the vacuum area is 3.85. The height of the base is 0.6. The width of the vacuum area is 3.85. The drawing also shows a central vertical axis and a central hole.



APPLICABLE P.C.B. DIMENSION (REF.)
適合基板寸法(参考)

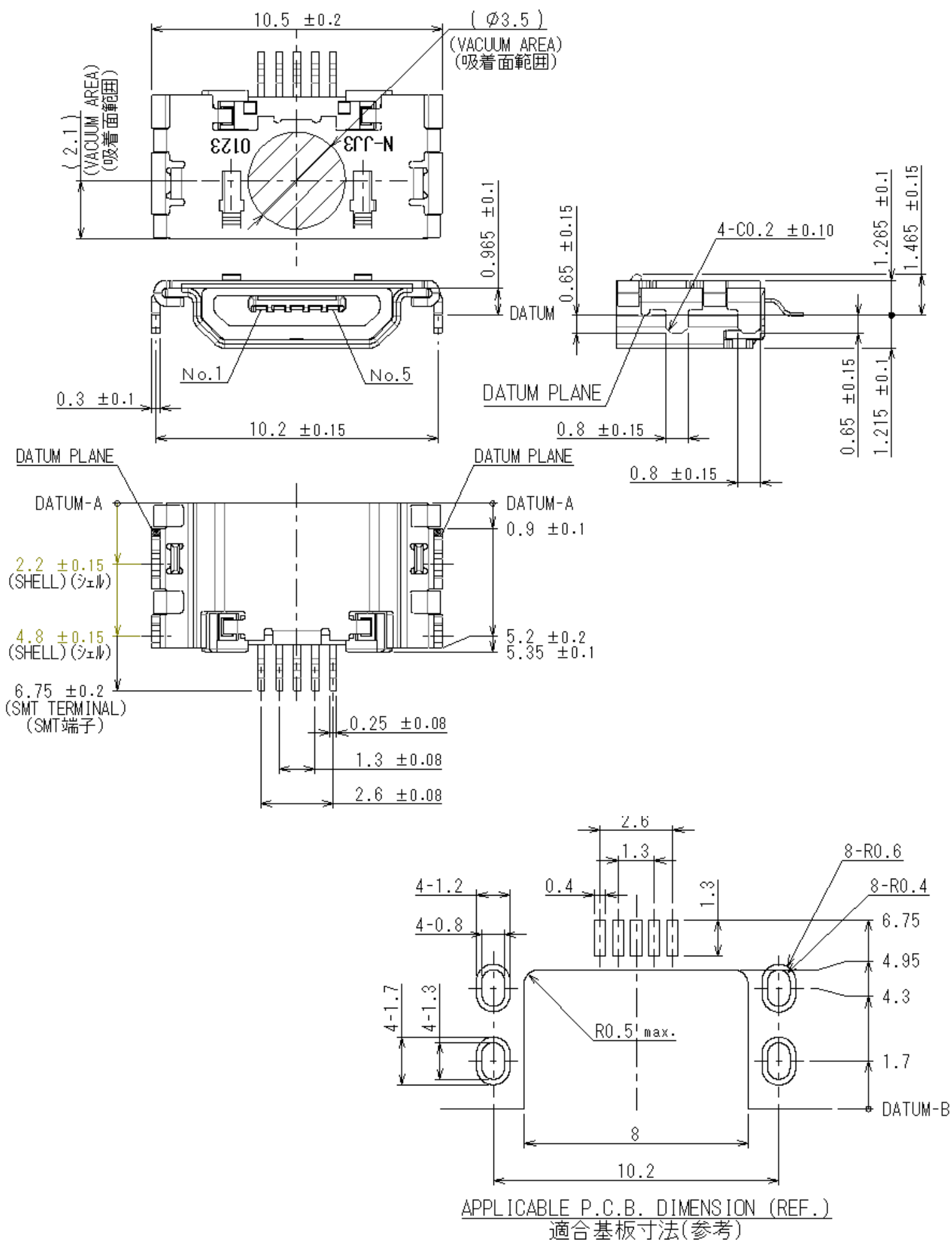
Standard Type (Micro-B): DX4R005HJ5

Unit: mm



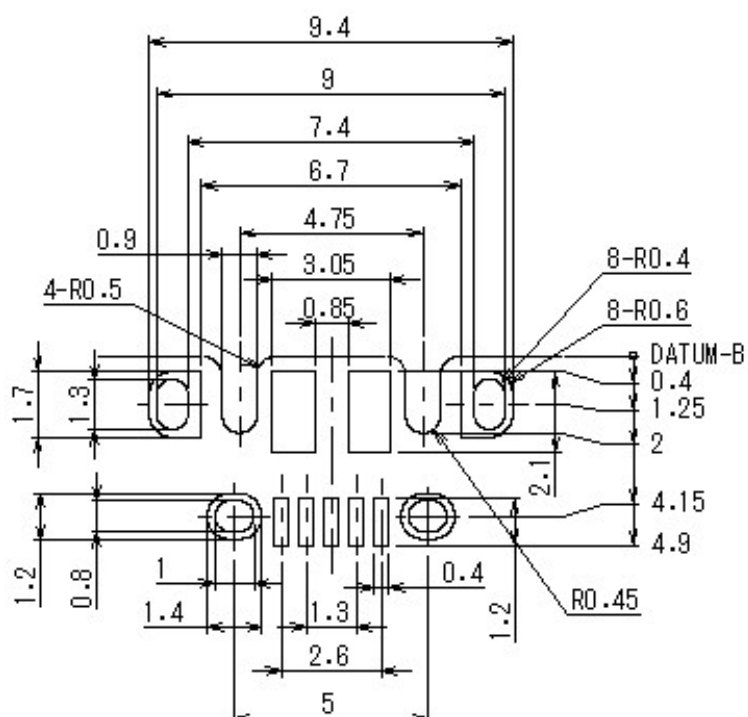
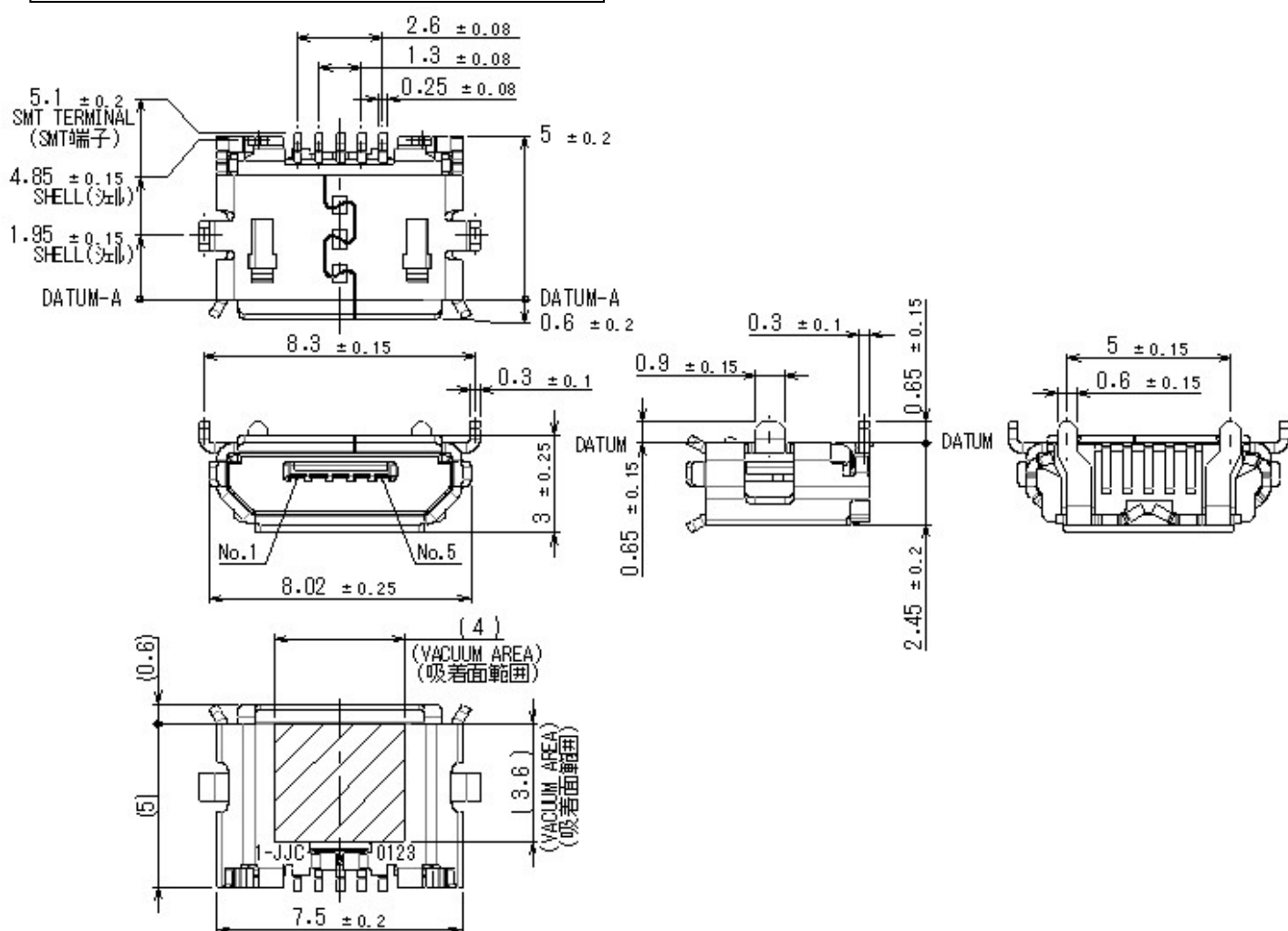
Mating Area Reinforced Type (Micro-B): DX4RN05JJ3

Unit: mm



Mating Area Reinforced Type (Micro-B): DX4R105JJC

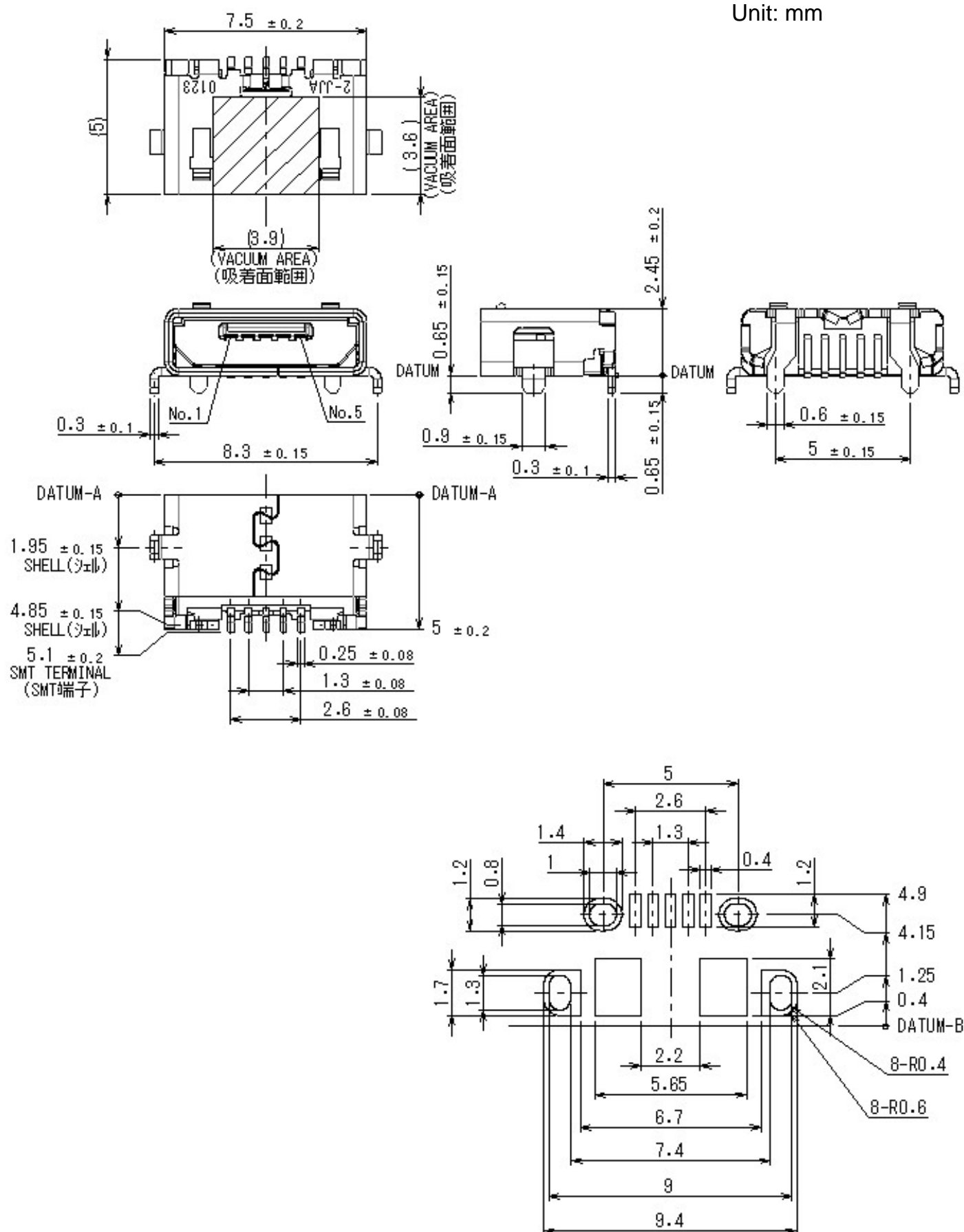
Unit: mm



APPLICABLE P.C.B. DIMENSION (REF.)
適合基板寸法(参考)

Mating Area Reinforced Type (Micro-AB): DX4R205JJA

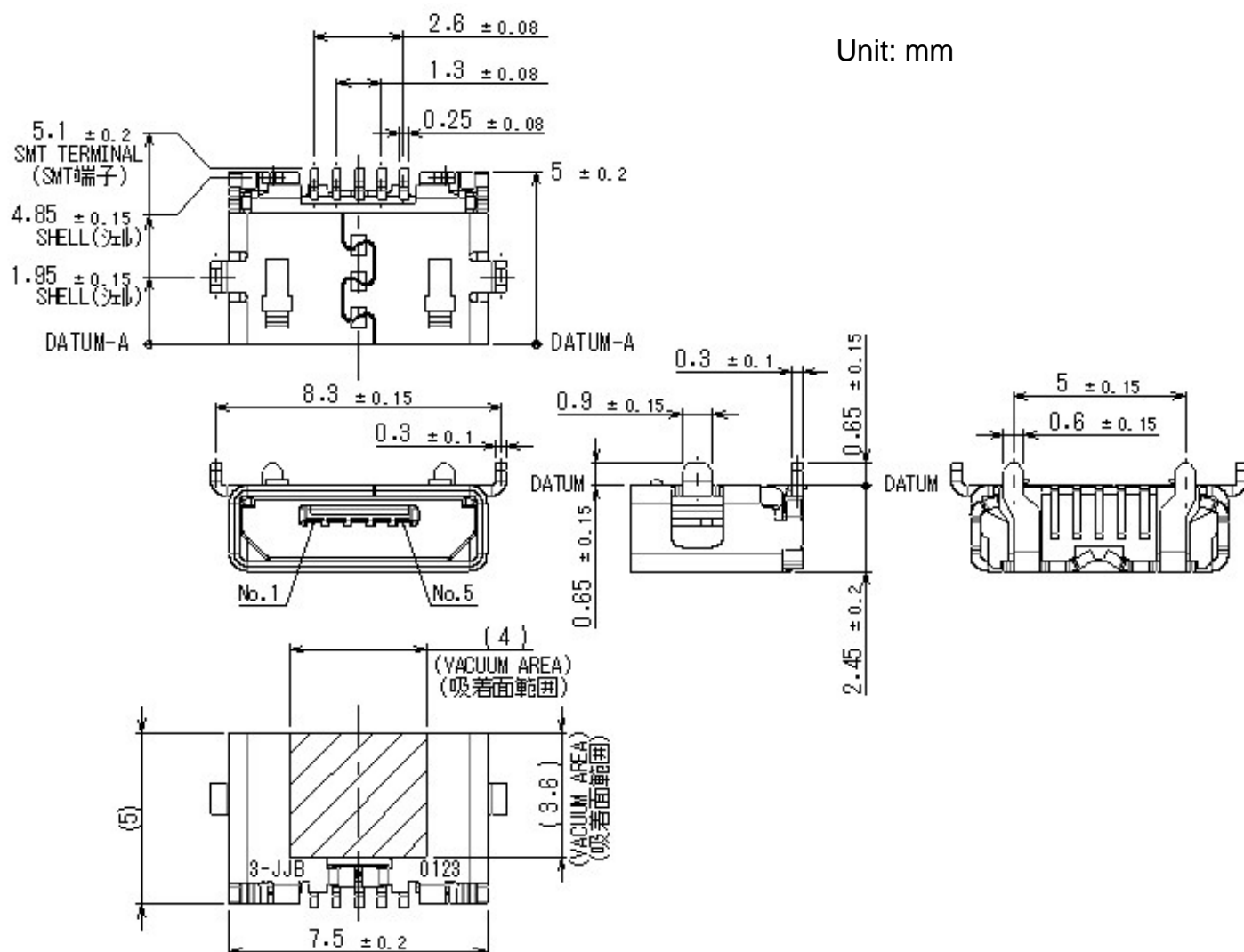
Unit: mm



APPLICABLE P.C.B. DIMENSION (REF.)
適合基板寸法(参考)

Mating Area Reinforced Type (Micro-AB): DX4R305JJB

Unit: mm



APPLICABLE P.C.B. DIMENSION (REF.)
適合基板寸法(参考)

Unit: mm

Top View Dimensions:

- Overall Width: 10.5 ± 0.2
- Pin Pitch: 2.1
- Pin 1 Marking: 0123
- Pin 2 Marking: 2-108
- Vacuum Area (吸着面範囲): $(\varnothing 3.5)$
- Bottom Flange Width: 0.6

Bottom View Dimensions:

- Overall Width: 10.2 ± 0.15
- Pin Pitch: 0.3 ± 0.1
- Pin 1 Marking: No.1
- Pin 5 Marking: No.5
- Bottom Flange Width: 0.965 ± 0.1
- DATUM PLANE


Side View Dimensions:

- Overall Height: 5.35 ± 0.1
- Pin Pitch: 0.25 ± 0.08
- Pin 1 Marking: 0.8 \pm 0.15
- Pin 5 Marking: 0.9 \pm 0.1
- DATUM-A
- DATUM PLANE

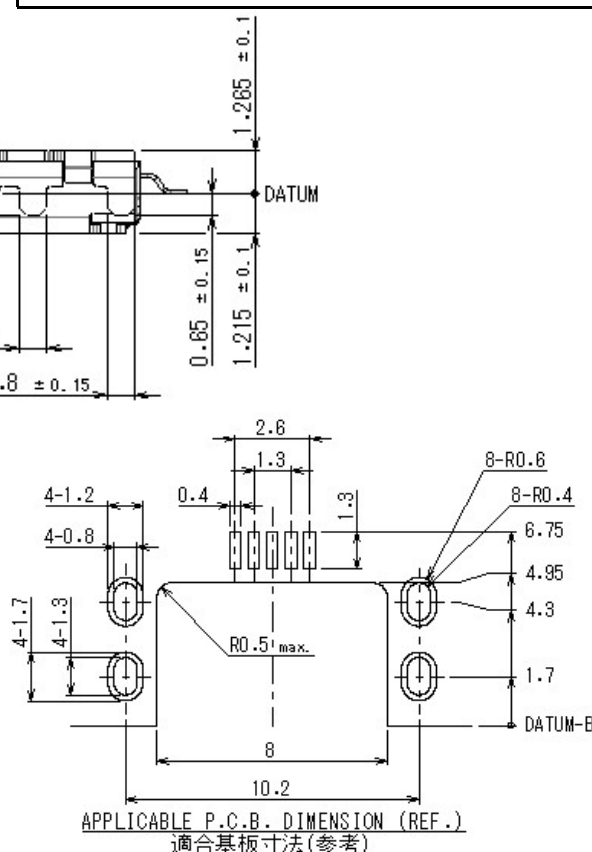
Other Dimensions:

- Pin 1 Marking: 2.2 ± 0.15 (SHELL) (シェル)
- Pin 5 Marking: 4.8 ± 0.15 (SHELL) (シェル)
- Pin 1 Marking: 6.75 ± 0.2 (SMT TERMINAL) (SMT端子)
- Pin 5 Marking: 1.3 ± 0.08
- Pin 1 Marking: 2.6 ± 0.08

area taper.



This diagram shows a cross-section of a multi-pin connector assembly. It features a central vertical axis. On the left side, there are two pins labeled '0123' and '2-119'. On the right side, there are two pins labeled '0123' and '2-119'. The pins are connected to a central block. A dashed blue line at the bottom indicates a taper or transition in the assembly.



Computers, office appliances, telecommunications devices (terminals, mobile units), measuring equipment, audiovisual equipment, home electric appliances, factory automation equipment, etc

10/10